

Public Document Pack



NOTICE OF MEETING

Meeting	Hampshire Local Outbreak Engagement Board
Date and Time	Monday, 2nd November, 2020 at 2.00 pm
Place	Virtual Teams Meeting - Microsoft Teams
Enquiries to	members.services@hants.gov.uk

John Coughlan CBE
Chief Executive
The Castle, Winchester SO23 8UJ

FILMING AND BROADCAST NOTIFICATION

This meeting is being held remotely and will be recorded and broadcast live via the County Council's website.

AGENDA

1. APOLOGIES FOR ABSENCE

To receive any apologies for absence.

2. DECLARATIONS OF INTEREST

All Members who believe they have a Disclosable Pecuniary Interest in any matter to be considered at the meeting must declare that interest and, having regard to Part 3 Paragraph 1.5 of the County Council's Members' Code of Conduct, leave the meeting while the matter is discussed, save for exercising any right to speak in accordance with Paragraph 1.6 of the Code. Furthermore all Members with a Personal Interest in a matter being considered at the meeting should consider, having regard to Part 5, Paragraph 4 of the Code, whether such interest should be declared, and having regard to Part 5, Paragraph 5 of the Code, consider whether it is appropriate to leave the meeting while the matter is discussed, save for exercising any right to speak in accordance with the Code.

3. MINUTES OF PREVIOUS MEETING (Pages 3 - 6)

To confirm the minutes of the previous meeting.

4. DEPUTATIONS

To receive any deputations notified under Standing Order 12.

5. CHAIRMAN'S ANNOUNCEMENTS

To receive any announcements the Chairman may wish to make.

6. OUTBREAK CONTROL POSITION REPORT (Pages 7 - 10)

To receive a report from the Director of Public Health on the current situation and up to date data.

7. ACTIONS OF THE DIRECTOR OF PUBLIC HEALTH

To receive an update from the Director of Public Health on actions taken and powers that have been used.

8. COMMUNICATION ENGAGEMENT UPDATE (Pages 11 - 12)

To receive an update on community engagement and messaging, including communication with communities and district councils.

ABOUT THIS AGENDA:

On request, this agenda can be provided in alternative versions (such as large print, Braille or audio) and in alternative languages.

ABOUT THIS MEETING:

The press and public are welcome to observe the public sessions of the meeting via the webcast.

Agenda Item 3

AT A MEETING of the Hampshire Local Outbreak Engagement Board of
HAMPSHIRE COUNTY COUNCIL held at the Castle, Winchester on Tuesday,
6th October, 2020

Chairman:

* Councillor Keith Mans

* Councillor Liz Fairhurst

* Councillor Judith Grajewski

* Councillor Patricia Stallard

Councillor Keith House

Invited Attendees

Also present at the invitation of the Chairman:

Councillor Keith House
Councillor Ken Rhatigan
Judy Gillow
Laura Taylor

25. APOLOGIES FOR ABSENCE

There were no apologies received.

26. DECLARATIONS OF INTEREST

Members were mindful that where they believed they had a Disclosable Pecuniary Interest in any matter considered at the meeting they must declare that interest at the time of the relevant debate and, having regard to the circumstances described in Part 3, Paragraph 1.5 of the County Council's Members' Code of Conduct, leave the meeting while the matter was discussed, save for exercising any right to speak in accordance with Paragraph 1.6 of the Code. Furthermore Members were mindful that where they believed they had a Non-Pecuniary interest in a matter being considered at the meeting they considered whether such interest should be declared, and having regard to Part 5, Paragraph 2 of the Code, considered whether it was appropriate to leave the meeting whilst the matter was discussed, save for exercising any right to speak in accordance with the Code.

27. MINUTES OF PREVIOUS MEETING

The minutes of the meeting held on 18 September 2020 were agreed as a correct record.

28. DEPUTATIONS

There were no deputations received.

The Chairman invited Councillor Jackie Porter to speak and she inquired about the role of the Director of Public Health on Safety Advisory groups. Councillor Porter asked if directives could be taken across the county to prevent duplicate

work and inconsistent decision making from local authorities. The questions would be answered by the Director of Public Health in the context of upcoming items in the meeting.

29. CHAIRMAN'S ANNOUNCEMENTS

The Chairman wished to acknowledge that over the last 48 hours, the actual numbers of those testing positive had gone up due to the significant number of tests not accounted for and the national correction has led to higher numbers in Hampshire. Upcoming public activities will be considered under national guidelines with a degree of consistency across the county and the region, though challenging with moving targets, rapid national changes, and area-specific lockdowns.

30. OUTBREAK CONTROL POSITION REPORT

The Director of Public Health shared the weekly update with the Board outlining the current position in term of managing the outbreak in Hampshire including data on current infection numbers, the position for care homes and death rates across the county.

The infection rates remain below that of the Southeast and England. There has been an increase in cases week by week, which is being monitored carefully to take required actions. Efforts are focused on managing and mitigating the increase in cases and moving forwards, in line with national guidance.

In response to questions, Members heard:

Proximity to London have impacted increased infection rates, as well as the ethnic diversity impact on disease, with continued preventative efforts and work in these areas.

There has been a slight increase in excess deaths from expected numbers at this time of year, possibly as a result of deaths brought earlier. There has not yet been an impact of flu on deaths. Deaths as a measure of infection is useful but requires longer term review and the consideration that those seriously ill are tested in the hospital setting rather than community testing of milder infections, as well as limits on testing capacity.

Local context remains critical and with spikes or rises in infection rate, communication must be adjusted and revise accordingly. The general rise and community spread have been due to exposure to asymptomatic people, cases in education settings or among individuals and households. The data is reviewed and mapped daily and while more younger people are impacted, the age is beginning to rise.

If incidents of influenza are suppressed due to social distancing and handwashing, we should see a reduction in influenza cases. Seasonal consideration of excess deaths is complex and will need longer term analysis. Prevention work and campaigns continue for both illnesses, which are often difficult to tell apart. Prevention will allow NHS to manage the level of respiratory

illnesses in hospitals. Thresholds remain unchanged for hospital admissions and the public messaging remains encouraging for those who need to access hospital services to get better.

The number of cases amongst Hampshire schools are on the rise but have generally been single cases with bubbles or partial bubbles affected, rather than outbreaks, with one exception including more than 1 case. The number of confirmed cases broken down by adults and children will be circulated after the meeting.

Public Health continues to work with Safety Advisory Groups (SAGs) in addressing Covid safety at events. While the process is complicated, it advises on cleaning regime, number of people, entry and exit, queues, social distancing etc. though not all events are licensed and thus will not go through a SAG. There is collaboration between the 11 SAGs, districts, and unitary colleagues, as well as environmental health colleagues, to ensure that clear, consistent local advice is provided, within the national guidance as well as that of guilds and sports associations.

31. ACTIONS OF THE DIRECTOR OF PUBLIC HEALTH

The Director of Public Health confirmed that under delegated powers the first legal direction was given on Friday 25 September as noted during the LOEB Briefing.

A statement was issued saying it was preferred that funfairs do not take place, but in the event that they do it could not be on Council owned land and it would be imperative to follow and monitor safety. There would need to be case by case risk assessments for any public events and also consider the implications for other areas of the retail sector.

Safety Advisory Groups are tried, tested, and well respected in their multi-agency collaboration, with the support of the Public Health England (PHE) team and engaged and efforts between county and district. They are carefully trying to balance safe operation, within a complex set of decision-making structures under an ever-changing set of guidance, to protect community from infection.

Communication and guidance are now being considered by the Health Protection Board for upcoming key events on the calendar (Bonfire Night, Remembrance Day, etc.) under the national guidelines and will be reported back to this Board.

32. COMMUNICATION ENGAGEMENT UPDATE

The Executive Member of Public Health provided an update on communications and engagement highlighting the two strands of work is being undertaken by the Council. The first manages current events on the ground in real time and second, provides information and guidance on staying safe. The Health Protection Board, Local Engagement Outbreak Board, data analysis, and national guidance all feed into the messaging alongside local branding.

Joint up communications are used by the Local Resilience Forum, Hampshire Fire and Police. These include press releases, social media, organic activity, and paid for targeted messaging for young people aged 18-24, BAME, and those in high risk settings. Newsletters to care homes and domiciliary care workers, weekly email updates to parish councils, and webinars to provide support for keeping schools safely open have continued. This monthly report had been shared with MPs and will continue to be circulated to them each month.

The Chairman noted that the Local Outbreak Engagement Board will continue to be briefed as required in addition to formal meetings. The next formal meeting of the Board is due to take place on 2 November.

The meeting concluded at 3:19pm.

Chairman,

HAMPSHIRE COUNTY COUNCIL

Report

Committee:	Hampshire Local Outbreak Engagement Board
Date:	2 November 2020
Title:	Outbreak Control Position Report
Report From:	Director of Public Health

Contact name: Simon Bryant

Tel: 02380 383326

Email: simon.bryant@hants.gov.uk

Purpose of this Report

1. The purpose of this report is to provide an update on the current situation and up-to-date data. Please note that a supplementary appendix containing the latest data will be published shortly before the meeting.
2. Link to the data can be found here:
<https://documents.hants.gov.uk/corprhantsweb/Covid19/Keep-Hampshire-Safe-Infographic.pdf>

Recommendation

3. To note the current data and implications.

REQUIRED CORPORATE AND LEGAL INFORMATION:

Links to the Strategic Plan

Hampshire maintains strong and sustainable economic growth and prosperity:	Yes
People in Hampshire live safe, healthy and independent lives:	Yes
People in Hampshire enjoy a rich and diverse environment:	Yes
People in Hampshire enjoy being part of strong, inclusive communities:	Yes

Other Significant Links

Links to previous Member decisions:	
<u>Title</u>	<u>Date</u>
Direct links to specific legislation or Government Directives	
<u>Title</u> COVID-19 Recovery Strategy	<u>Date</u> June 2020

Section 100 D - Local Government Act 1972 - background documents	
<p>The following documents discuss facts or matters on which this report, or an important part of it, is based and have been relied upon to a material extent in the preparation of this report. (NB: the list excludes published works and any documents which disclose exempt or confidential information as defined in the Act.)</p>	
<u>Document</u>	<u>Location</u>
None	

EQUALITIES IMPACT ASSESSMENT:

1. Equality Duty

The County Council has a duty under Section 149 of the Equality Act 2010 ('the Act') to have due regard in the exercise of its functions to the need to:

- Eliminate discrimination, harassment and victimisation and any other conduct prohibited by or under the Act with regard to the protected characteristics as set out in section 4 of the Act (age, disability, gender reassignment, marriage and civil partnership, pregnancy and maternity, race, religion or belief, sex and sexual orientation);
- Advance equality of opportunity between persons who share a relevant protected characteristic within section 149(7) of the Act (age, disability, gender reassignment, pregnancy and maternity, race, religion or belief, sex and sexual orientation) and those who do not share it;
- Foster good relations between persons who share a relevant protected characteristic within section 149(7) of the Act (see above) and persons who do not share it.

Due regard in this context involves having due regard in particular to:

- The need to remove or minimise disadvantages suffered by persons sharing a relevant protected characteristic that are connected to that characteristic;
- Take steps to meet the needs of persons sharing a relevant protected characteristic that are different from the needs of persons who do not share it;
- Encourage persons sharing a relevant protected characteristic to participate in public life or in any other activity in which participation by such persons is disproportionately low.

2. Equalities Impact Assessment:

2.1 This paper does not contain any proposals for major service changes which may have an equalities impact other than to improve outcomes and manage the pandemic.

This page is intentionally left blank

Covid-19 communications

20 September – 20 October

Social media campaigns

Key themes covered

- NHS Test and Trace app
- Rule of six
- Hands-face-space
- Car sharing and safer travel advice
- Covid-19 data dashboards
- When to get tested
- Social distancing
- When to self-isolate

97
Social media posts

954,838
People reached

227,512
Video views

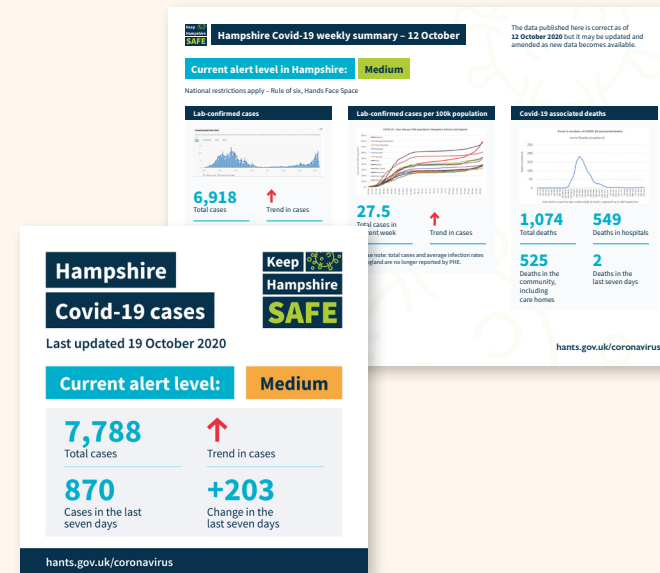
Examples

When to self isolate video



Most successful posts

- Redesigned data dashboards to reflect new Government alert levels



Covid-19 Data Dashboards

98,000
Combined people reached

When to self isolate video



Public and stakeholder engagement

Key areas of enquiry

- Requests for information on Covid-19 cases in Hampshire schools and care homes
- Impact of Covid-19 on seasonal events (including directions issued) – i.e. funfairs (various), Halloween, Winchester Christmas market
- Hampshire status following Government's introduction of new Covid-19 alert tiers
- Financial impact of Covid-19 on Hampshire County Council
- Availability of County Council customer phone lines during pandemic
- Enforcement of Covid-19 restrictions (i.e. Covid-19 marshals and fines)

Dedicated webpages

63,228
Views of dedicated Covid-19 webpages

Top three pages (other than homepage):

- Positive cases in schools
- Advice for going back to school
- Weekly data dashboards

Autumn/winter events

Collaboration with district partners to ensure consistent and clear messaging to the public and event organisers:

- Media and social media
- Event checklist for environmental health officers
- Responses to a wide range of stakeholder and public enquiries

80
Media enquiries handled

141
News items

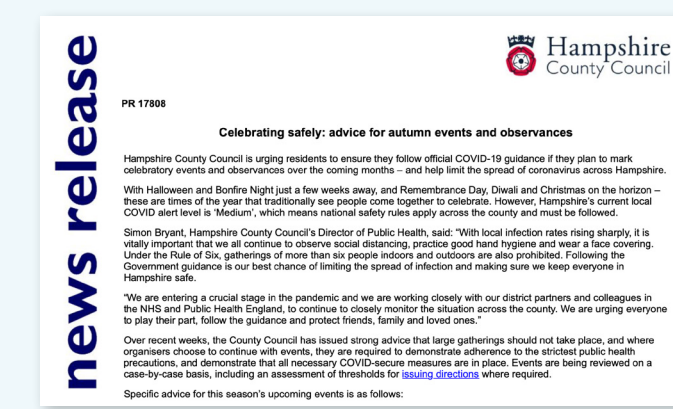
97%
Positive/neutral coverage

Key stakeholder engagement

- Covid-19 tailored e-briefings circulated to Hampshire MPs, County Councillors and district councils' Chief Executives – also to County Council key partners, all town and parish councils, and related updates sent via regular e-bulletin for local councils

Partnership working

- Ongoing sharing of key messages with Hampshire and Isle of Wight partners
- Created tailored versions of the Rule of Six animation for Hampshire districts
- Parish council newsletters with tailored Covid content



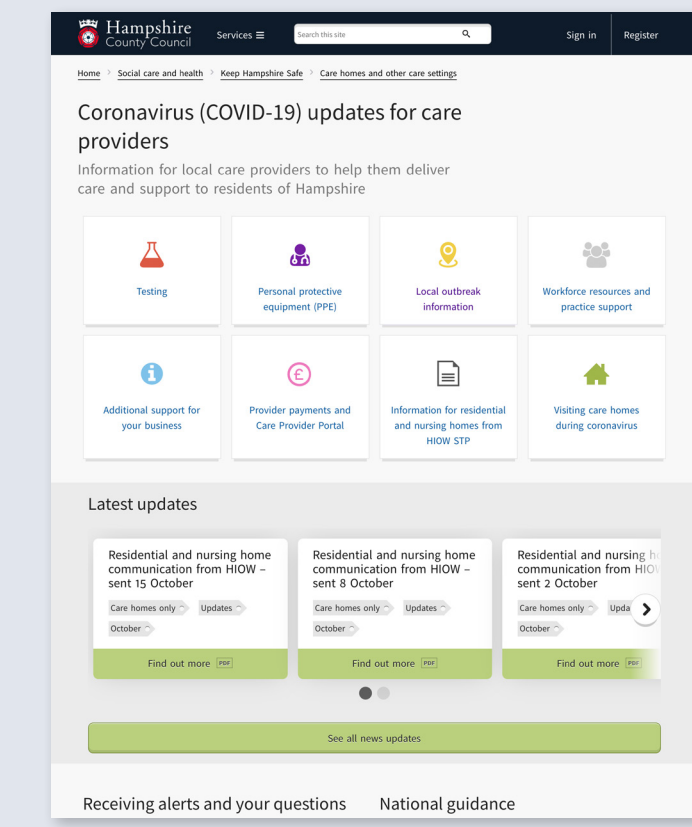
Support for high-risk settings

Supporting schools with local outbreaks

- Communications guidance and support provided to Hampshire primary and secondary schools to aid parent engagement
- Letters and advice to schools on suggested conversations with parents and community stakeholders
- Statements to local media in relation to Covid positive cases in school communities – media signposted to newly created webpage with details of schools with positive cases

Adult social care providers

- Outbreak flowcharts to support with response for wide range of care settings
- New fortnightly COVID-alert newsletter sent to more than 2,000 care providers in Hampshire
- 'One stop shop' web pages created for county's care providers with latest advice, guidance and updates



Working with Hampshire Schools

Examples include:

- Press releases and social media – key messages in preparation for half-term:
- Thank you for continued support during a challenging start to the academic year
- Cascade of key public health messages to parents and carers – Rule of Six and Hands, Face, Space
- Joint letter from Directors of Public Health and Children's Services to Hampshire head teachers and early years settings
- Creation of digital asset for educational settings for use in own communications to parents and carers



- "When should I send my child to school?" flowcharts for parents and teachers

- Ongoing promotion of social distancing requirements on school grounds



This page is intentionally left blank